


Product name	Chest Press	model	PL-01
Picture			
			
<p>Technical description</p>	<ul style="list-style-type: none"> ■ Main frame pipe: flat elliptical (L120 * W60 * T3; L100 * W50 * T3) round pipe (φ 76 * 3). ■ Appearance shaping: a new humanized design, which has been patented. ■ Paint baking process: dust-free paint baking process for automobiles. ■ Cushion: 3D polyurethane molding process with excellent texture, super fiber leather surface, waterproof and wear-resistant, color can be matched at will. ■ Handle: PP soft rubber material, more comfortable to grip. ■ Product key points: independent movement and biaxial push angle expand exercise area. The progressive strength curve gradually increases to the movement force at the position of maximum exercise intensity. The large-size handle is designed to disperse the load in the larger area of the user's palm, so that the exercise comfort is better. At the same time, the convenient seat adjustment can meet the needs of diversified users. <p>Chest Press 推胸训练器</p> <p>Size: L-1925 W-1040 H-1745mm N.W: 135kgs</p> <p>Training position: pectoralis major, deltoid and triceps brachii</p>		

Product name	Incline Press	model	PL-02
--------------	---------------	-------	-------

Picture



<p>Technical description</p>	<ul style="list-style-type: none"> ■ Main frame pipe: flat elliptical (L120 * W60 * T3; L100 * W50 * T3) round pipe (φ 76 * 3).Appearance shaping: a new humanized design, which has been patented.Paint baking process: dust-free paint baking process for automobiles. ■ Seat cushion: excellent 3D polyurethane molding process, the surface is made of super fiber leather, waterproof and wear-resistant, and the color can be matched at will. ■ Handle: PP soft rubber material, more comfortable to grip. ■ Product key points: independent movement and biaxial push angle expand exercise area. The progressive strength curve gradually increases the motion force to the position of greater motion intensity. The large-size handle design can distribute the load in the larger area of the user's palm, so that the exercise comfort is better, and the convenient seat adjustment can meet the height needs of various users <p>Incline Press 上斜推胸训练器</p> <p>Size: L-1940 W-1040 H-1805mm N.W: 132kgs</p> <p>Training position: pectoralis major, deltoid and triceps brachii</p>
------------------------------	---

Product name	Shoulder Press	model	PL-03
--------------	----------------	-------	-------

Picture



<p>Technical description</p>	<ul style="list-style-type: none"> ■ Main frame pipe: flat elliptical (L120 * W60 * T3; L100 * W50 * T3) round pipe (φ 76 * 3).Appearance shaping: a new humanized design, which has been patented.Paint baking process: dust-free paint baking process for automobiles. ■ Seat cushion: excellent 3D polyurethane molding process, the surface is made of super fiber leather, waterproof and wear-resistant, and the color can be matched at will. ■ Handle: PP soft rubber material, more comfortable to grip. ■ Product key points: independent movement and biaxial push angle expand exercise area. The large-scale handle design can distribute the load in the larger area of the user's palm, so that the exercise comfort is better. At the same time, the convenient seat adjustment can meet the diversified height needs of the user. <p>Shoulder Press 推肩训练器</p> <p>Size: L-1530 W-1475 H-1500mm N.W: 122kgs</p> <p>Training position: trapezius, deltoid, triceps brachii</p>
------------------------------	--

Product name	Seated Dip	model	PL-04
---------------------	-------------------	--------------	--------------

Picture



<p>Technical description</p>	<ul style="list-style-type: none"> ■ Main frame pipe: flat elliptical (L120 * W60 * T3; L100 * W50 * T3) round pipe (φ 76 * 3).Appearance shaping: a new humanized design, which has been patented.Paint baking process: dust-free paint baking process for automobiles. ■ Seat cushion: excellent 3D polyurethane molding process, the surface is made of super fiber leather, waterproof and wear-resistant, and the color can be matched at will. ■ Handle: PP soft rubber material, more comfortable to grip. ■ Product key points: by adjusting the distance between the handles to set a unique direction of movement, to ensure that the correct target exercises, to achieve the desired exercise effect. The oversized push down handle has a wide surface to reduce pressure. <p>Seated Dip 三头下压训练器</p> <p>Size: L-1975 W-1015 H-1005mm N.W: 110kgs</p> <p>Training position: pectoralis major, deltoid and triceps brachii</p>
-------------------------------------	---

Product name	Biceps Curl	model	PL-05
--------------	-------------	-------	-------

Picture



<p>Technical description</p>	<ul style="list-style-type: none"> ■ Main frame pipe: flat elliptical (L120 * W60 * T3; L100 * W50 * T3) round pipe (φ 76 * 3).Appearance shaping: a new humanized design, which has been patented.Paint baking process: dust-free paint baking process for automobiles. ■ Seat cushion: excellent 3D polyurethane molding process, the surface is made of super fiber leather, waterproof and wear-resistant, and the color can be matched at will. ■ Handle: PP soft rubber material, more comfortable to grip. ■ Key points of the product: imitating the structure of traditional pastor bench trainer, providing smooth, smooth movement and extraordinary reliability. Biceps training device takes up less space and is easy to get in and out. It can carry out fast and effective biceps exercise. The user's arm guard board is inclined to improve comfort and exercise effect as much as possible. <p>Biceps Curl 二头肌训练器 Size: L-1475 W-925 H-1265mm N.W: 95kgs Training position: biceps brachii</p>
------------------------------	--

Product name	Pulldown	model	PL-06
--------------	----------	-------	-------

Picture



<p>Technical description</p>	<ul style="list-style-type: none"> ■ Main frame pipe: flat elliptical (L120 * W60 * T3; L100 * W50 * T3) round pipe (φ 76 * 3).Appearance shaping: a new humanized design, which has been patented.Paint baking process: dust-free paint baking process for automobiles. ■ Seat cushion: excellent 3D polyurethane molding process, the surface is made of super fiber leather, waterproof and wear-resistant, and the color can be matched at will. ■ Handle: PP soft rubber material, more comfortable to grip. ■ Product highlights: independent movement and separate pulling angle to expand the exercise area. The diminishing strength curve gradually reduces the force of the later part of the exercise, so as to achieve the in-depth fitness effect. The traditional wide and narrow (palm grip surface) grip position provides users with a variety of training options. <p>Pulldown 高拉背训练器 Size: L-1825 W-1450 H-2090mm N.W: 128kgs Training position: trapezius, deltoid, triceps brachii</p>
-------------------------------------	--

Product name	Low Row	model	PL-07
--------------	---------	-------	-------

Picture



<p>Technical description</p>	<ul style="list-style-type: none"> ■ Main frame pipe: flat elliptical (L120 * W60 * T3; L100 * W50 * T3) round pipe (φ 76 * 3).Appearance shaping: a new humanized design, which has been patented.Paint baking process: dust-free paint baking process for automobiles. ■ Seat cushion: excellent 3D polyurethane molding process, the surface is made of super fiber leather, waterproof and wear-resistant, and the color can be matched at will. ■ Handle: PP soft rubber material, more comfortable to grip. ■ Key points of the product: the design imitates the bow barbell rowing exercise, and adopts independent exercise and separate pulling angle to expand the exercise area. Support free low back exercise, upper limbs and abdomen training, improve body balance and enhance functional strength. <p>Low Row 低拉背训练器</p> <p>Size: L-1675 W-1310 H-1695mm N.W: 133kgs</p> <p>Training position: trapezius, deltoid, triceps brachii</p>
-------------------------------------	---

Product name	Rowing	model	PL-08
--------------	--------	-------	-------

Picture



Technical description

- Main frame pipe: flat elliptical (L120 * W60 * T3; L100 * W50 * T3) round pipe (φ 76 * 3).Appearance shaping: a new humanized design, which has been patented.Paint baking process: dust-free paint baking process for automobiles.
 - Seat cushion: excellent 3D polyurethane molding process, the surface is made of super fiber leather, waterproof and wear-resistant, and the color can be matched at will.
 - Handle: PP soft rubber material, more comfortable to grip.
 - Key points of the product: independent movement and separate pulling angle, decreasing force curve gradually reduces the post exercise force, so as to achieve full fitness. Large size foot pedal and breast pad support improve the stability of large-scale muscle group collective movement. Multiple grip positions meet a variety of fitness options.
- Rowing 划船拉背训练器
- Size: L-1455 W-1385 H-1270mm N.W: 123kgs
- Training position: trapezius, deltoid, triceps brachii

Product name	Leg Curl	model	PL-09
--------------	----------	-------	-------

Picture



<p>Technical description</p>	<ul style="list-style-type: none"> ■ Main frame pipe: flat elliptical (L120 * W60 * T3; L100 * W50 * T3) round pipe (φ 76 * 3).Appearance shaping: a new humanized design, which has been patented.Paint baking process: dust-free paint baking process for automobiles. ■ Seat cushion: excellent 3D polyurethane molding process, the surface is made of super fiber leather, waterproof and wear-resistant, and the color can be matched at will. ■ Handle: PP soft rubber material, more comfortable to grip. ■ Product key points: the new non adjustment design, users can easily change from right leg exercise to left leg exercise without adjustment. The knee bending structure provides smooth and comfortable performance as well as excellent muscle contraction exercise. <p>Leg Curl 跪式曲腿训练器</p> <p>Size: L-1540 W-1275 H-1370mm N.W: 120kgs</p> <p>Training position: biceps femoris</p>
------------------------------	---

Product name	Leg Extension	model	PL-10
--------------	---------------	-------	-------

Picture



<p>Technical description</p>	<ul style="list-style-type: none"> ■ Main frame pipe: flat elliptical (L120 * W60 * T3; L100 * W50 * T3) round pipe (φ 76 * 3).Appearance shaping: a new humanized design, which has been patented.Paint baking process: dust-free paint baking process for automobiles. ■ Seat cushion: excellent 3D polyurethane molding process, the surface is made of super fiber leather, waterproof and wear-resistant, and the color can be matched at will. ■ Handle: PP soft rubber material, more comfortable to grip. ■ Product key points: provide independent leg movement function, which can achieve a greater degree of balance and better exercise muscles. A low starting weight and a balanced strength curve help to provide natural resistance through full range of motion. <p>Leg Extension 坐式伸腿训练器</p> <p>Size: L-1550 W-1530 H-1210mm N.W: 109kgs</p> <p>Training position: quadriceps femoris</p>
------------------------------	--

Product name	Seatde/Standing shrug	model	PL-11
--------------	-----------------------	-------	-------

Picture



<p>Technical description</p>	<ul style="list-style-type: none"> ■ Main frame pipe: flat elliptical (L120 * W60 * T3; L100 * W50 * T3) round pipe (φ 76 * 3).Appearance shaping: a new humanized design, which has been patented.Paint baking process: dust-free paint baking process for automobiles. ■ Seat cushion: excellent 3D polyurethane molding process, the surface is made of super fiber leather, waterproof and wear-resistant, and the color can be matched at will. ■ Handle: PP soft rubber material, more comfortable to grip. ■ Product points: designed to allow exercisers to complete sitting or standing exercise while providing better consistency for trapezius. <p>Seatde/Standing shrug 坐式及站式耸肩</p> <p>Size: L-1630 W-1154 H-1158mm N.W: 106kgs</p> <p>Training site: trapezius muscle</p>
------------------------------	---

Product name	Lso-Lateral Horizontal Bench Press	model	PL-12
--------------	------------------------------------	-------	-------

Picture



<p>Technical description</p>	<ul style="list-style-type: none"> ■ Main frame pipe: flat elliptical (L120 * W60 * T3; L100 * W50 * T3) round pipe (φ 76 * 3).Appearance shaping: a new humanized design, which has been patented.Paint baking process: dust-free paint baking process for automobiles. ■ Seat cushion: excellent 3D polyurethane molding process, the surface is made of super fiber leather, waterproof and wear-resistant, and the color can be matched at will. ■ Handle: PP soft rubber material, more comfortable to grip. ■ Product points: single weight angle combined with equal strength and different muscle stimulates the independent expansion and contraction movement. It is a split variant of the traditional chest training device with an angle backing pad for improving stability. <p>Lso-Lateral Horizontal Bench Press 平卧推胸</p> <p>Size: L-1912 W-1747 H-1007mm N.W: 117kgs</p> <p>Training position: pectoralis major, deltoid and triceps brachii</p>
------------------------------	---

Product name	Super Incline Chest Press	model	PL-13
--------------	---------------------------	-------	-------

Picture



<p>Technical description</p>	<ul style="list-style-type: none"> ■ Main frame pipe: flat elliptical (L120 * W60 * T3; L100 * W50 * T3) round pipe (φ 76 * 3).Appearance shaping: a new humanized design, which has been patented.Paint baking process: dust-free paint baking process for automobiles. ■ Seat cushion: excellent 3D polyurethane molding process, the surface is made of super fiber leather, waterproof and wear-resistant, and the color can be matched at will. ■ Handle: PP soft rubber material, more comfortable to grip. ■ Product points: single weight angle combined with equal strength and different muscle stimulates the independent expansion and contraction movement. The unique movement path eliminates the gap between the push shoulder training device and the upper oblique chest training device. <p>Super Incline Chest Press 超上斜推胸</p> <p>Size: L-1806 W-1132 H-1793mm N.W: 130kgs</p> <p>Training position: pectoralis major, deltoid and triceps brachii、肱二头肌</p>
-------------------------------------	---

Product name	Decline Chest Press	model	PL-14
--------------	---------------------	-------	-------

Picture



<p>Technical description</p>	<ul style="list-style-type: none"> ■ Main frame pipe: flat elliptical (L120 * W60 * T3; L100 * W50 * T3) round pipe (φ 76 * 3).Appearance shaping: a new humanized design, which has been patented.Paint baking process: dust-free paint baking process for automobiles. ■ Seat cushion: excellent 3D polyurethane molding process, the surface is made of super fiber leather, waterproof and wear-resistant, and the color can be matched at will. ■ Handle: PP soft rubber material, more comfortable to grip. ■ Product points: single weight angle combined with equal strength and different muscle stimulates the independent expansion and contraction movement. <p>Decline Chest Press 下斜推胸</p> <p>Size: L-1752 W-1322 H-1542mm N.W: 129kgs</p> <p>Training position: pectoralis major, deltoid and triceps brachii</p>
-------------------------------------	---

Product name	Wide Chest Press	model	PL-15
--------------	------------------	-------	-------

Picture



<p>Technical description</p>	<ul style="list-style-type: none"> ■ Main frame pipe: flat elliptical (L120 * W60 * T3; L100 * W50 * T3) round pipe (φ 76 * 3).Appearance shaping: a new humanized design, which has been patented.Paint baking process: dust-free paint baking process for automobiles. ■ Seat cushion: excellent 3D polyurethane molding process, the surface is made of super fiber leather, waterproof and wear-resistant, and the color can be matched at will. ■ Handle: PP soft rubber material, more comfortable to grip. ■ Product points: single weight angle combined with equal strength and different muscle stimulates the independent expansion and contraction movement. Compared with the downward push chest training device, the machine has a larger angle of contraction motion and is suitable for larger body exercisers. <p>Wide Chest Press 扩角度推胸</p> <p>Size: L-1920 W-1276 H-1843mm N.W: 145kgs</p> <p>Training position: pectoralis major, deltoid and triceps brachii</p>
------------------------------	--

Product name	Lso-Lateral Chest/Back	model	PL-16
---------------------	-------------------------------	--------------	--------------

Picture



<p>Technical description</p>	<ul style="list-style-type: none"> ■ Main frame pipe: flat elliptical (L120 * W60 * T3; L100 * W50 * T3) round pipe (φ 76 * 3).Appearance shaping: a new humanized design, which has been patented.Paint baking process: dust-free paint baking process for automobiles. ■ Seat cushion: excellent 3D polyurethane molding process, the surface is made of super fiber leather, waterproof and wear-resistant, and the color can be matched at will. ■ Handle: PP soft rubber material, more comfortable to grip. ■ 产品要点: 单独的重量角结合产生相等强度和不同肌肉刺激的独立扩张和收缩运动。此组合式器械提供了用于胸部和背部锻炼的解决方案。 <p>Lso-Lateral Chest/Back 推胸及高拉背</p> <p>Size: L-1915 W-1676 H-2120mm N.W: 173kgs</p> <p>Training position: pectoralis major, deltoid and triceps brachii</p>
-------------------------------------	--

Product name	Iso-Lateral Front Lat Pulldown	model	PL-17
--------------	--------------------------------	-------	-------

Picture



<p>Technical description</p>	<ul style="list-style-type: none"> ■ Main frame pipe: flat elliptical (L120 * W60 * T3; L100 * W50 * T3) round pipe (φ 76 * 3).Appearance shaping: a new humanized design, which has been patented.Paint baking process: dust-free paint baking process for automobiles. ■ Seat cushion: excellent 3D polyurethane molding process, the surface is made of super fiber leather, waterproof and wear-resistant, and the color can be matched at will. ■ Handle: PP soft rubber material, more comfortable to grip. ■ Product points: single weight angle combined with equal strength and different muscle stimulates the independent expansion and contraction movement. This instrument provides a dual pivoting training pivot with two different planes. <p>Iso-Lateral Front Lat Pulldown 前高拉训练器</p> <p>Size: L-1670 W-1612 H-2081mm N.W: 141kgs</p> <p>Training site: triceps brachii and trapezius muscle</p>
-------------------------------------	---

Product name	D.Y Row	model	PL-18
--------------	---------	-------	-------

Picture



<p>Technical description</p>	<ul style="list-style-type: none"> ■ Main frame pipe: flat elliptical (L120 * W60 * T3; L100 * W50 * T3) round pipe (φ 76 * 3).Appearance shaping: a new humanized design, which has been patented.Paint baking process: dust-free paint baking process for automobiles. ■ Seat cushion: excellent 3D polyurethane molding process, the surface is made of super fiber leather, waterproof and wear-resistant, and the color can be matched at will. ■ Handle: PP soft rubber material, more comfortable to grip. ■ Product points: single weight angle combined with equal strength and different muscle stimulates the independent expansion and contraction movement. The position of the reverse grip with overturned pivot provides a natural movement arc for the exercisers. <p>D.Y Row DY 划船</p> <p>Size: L-1630 W-1390 H-2056mm N.W: 147kgs</p> <p>Training position: triceps brachii, trapezius and deltoid</p>
------------------------------	---

Product name	Gripper	model	PL-19
--------------	---------	-------	-------

Picture



Technical description

- Main frame pipe: flat elliptical (L120 * W60 * T3; L100 * W50 * T3) round pipe (φ 76 * 3).Appearance shaping: a new humanized design, which has been patented.Paint baking process: dust-free paint baking process for automobiles.
- Seat cushion: excellent 3D polyurethane molding process, the surface is made of super fiber leather, waterproof and wear-resistant, and the color can be matched at will.
- Handle: PP soft rubber material, more comfortable to grip.
- Main points of the product: enhance handshaking power for functional applications and sports specific applications.

Gripper 握力训练器
 Size: L-1230 W-660 H-940mm N.W: 47kgs
 Training site: brachioradialis

Product name	Abdominal Oblique Crunch	model	PL-20
--------------	--------------------------	-------	-------

Picture



<p>Technical description</p>	<ul style="list-style-type: none"> ■ Main frame pipe: flat elliptical (L120 * W60 * T3; L100 * W50 * T3) round pipe (φ 76 * 3).Appearance shaping: a new humanized design, which has been patented.Paint baking process: dust-free paint baking process for automobiles. ■ Seat cushion: excellent 3D polyurethane molding process, the surface is made of super fiber leather, waterproof and wear-resistant, and the color can be matched at will. ■ Handle: PP soft rubber material, more comfortable to grip. ■ Product key points: use the rotating seat to target the oblique muscles. This two action exercise trains the entire abdominal wall. <p>Abdominal Oblique Crunch 腹部全收缩训练器</p> <p>Size: L-1485 W-1226 H-1722mm N.W: 130kgs</p> <p>Training site: abdominal muscles</p>
-------------------------------------	--

Product name	Iso-Lateral Leg Curl	model	PL-21
--------------	----------------------	-------	-------

Picture



<p>Technical description</p>	<ul style="list-style-type: none"> ■ Main frame pipe: flat elliptical (L120 * W60 * T3; L100 * W50 * T3) round pipe (φ 76 * 3).Appearance shaping: a new humanized design, which has been patented.Paint baking process: dust-free paint baking process for automobiles. ■ Seat cushion: excellent 3D polyurethane molding process, the surface is made of super fiber leather, waterproof and wear-resistant, and the color can be matched at will. ■ Handle: PP soft rubber material, more comfortable to grip. ■ Product points: single weight angle combined with equal strength and different muscle stimulates the independent expansion and contraction movement. In addition, the divergence angle between the buttock and the chest pad helps reduce the stress on the lower back. <p>Iso-Lateral Leg Curl 卧式曲腿</p> <p>Size: L-1754 W-1317 H-960mm N.W: 111kgs</p> <p>Training position: biceps femoris</p>
------------------------------	--

Product name	so-Lateral Leg Press	model	PL-22
--------------	----------------------	-------	-------

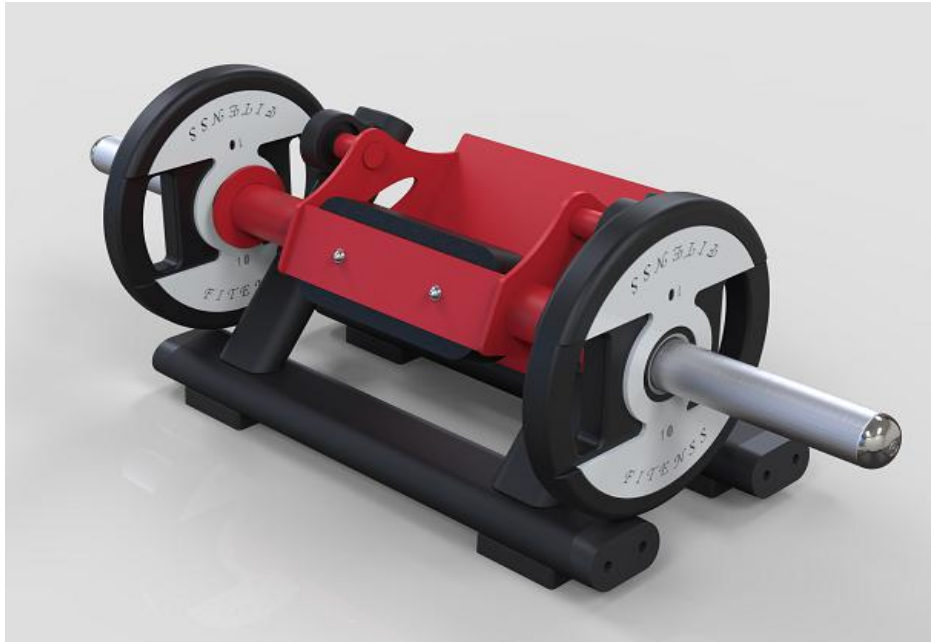
Picture



<p>Technical description</p>	<ul style="list-style-type: none"> ■ Main frame pipe: flat elliptical (L120 * W60 * T3; L100 * W50 * T3) round pipe (φ 76 * 3).Appearance shaping: a new humanized design, which has been patented.Paint baking process: dust-free paint baking process for automobiles. ■ Seat cushion: excellent 3D polyurethane molding process, the surface is made of super fiber leather, waterproof and wear-resistant, and the color can be matched at will. ■ Handle: PP soft rubber material, more comfortable to grip. ■ Key points of the product: a separate weight angle and a separate stretching path achieve the same strength training effect and muscle simulation type. <p>Iso-Lateral Leg Press 分动式曲腿</p> <p>Size: L-2031 W-1204 H-1430mm N.W: 203kgs</p> <p>Training position: biceps femoris、股四头肌</p>
------------------------------	--

Product name	Tibia Dorsi Flexion	model	PL-23
--------------	---------------------	-------	-------

Picture



<p>Technical description</p>	<ul style="list-style-type: none"> ■ Main frame pipe: flat elliptical (L120 * W60 * T3; L100 * W50 * T3) round pipe (φ 76 * 3).Appearance shaping: a new humanized design, which has been patented.Paint baking process: dust-free paint baking process for automobiles. ■ Seat cushion: excellent 3D polyurethane molding process, the surface is made of super fiber leather, waterproof and wear-resistant, and the color can be matched at will. ■ Key points of the product: transfer the resistance from the spine to the buttocks, and conduct the anterior tibial muscle movement specially. <p>Tibia Dorsi Flexion 胫骨肌训练器 Size: L-1112 W-350 H-330mm N.W: 33kgs Training site: tibialis anterior muscle</p>
------------------------------	---

Product name	Hip Builder	model	PL-24
--------------	-------------	-------	-------

Picture



<p>Technical description</p>	<ul style="list-style-type: none"> ■ Main frame pipe: flat elliptical (L120 * W60 * T3; L100 * W50 * T3) round pipe (φ 76 * 3).Appearance shaping: a new humanized design, which has been patented.Paint baking process: dust-free paint baking process for automobiles. ■ Seat cushion: excellent 3D polyurethane molding process, the surface is made of super fiber leather, waterproof and wear-resistant, and the color can be matched at will. ■ Handle: PP soft rubber material, more comfortable to grip. ■ Product key points: use independent motion track to keep muscle contraction equal. <p>Hip Builder 臀部训练器</p> <p>Size: L-1822 W-1570 H-1556mm N.W: 168kgs</p> <p>Training parts: gluteus maximus, biceps femoris and quadriceps femoris</p>
-------------------------------------	--

Product name	Linear Leg perss	model	PL-56
--------------	------------------	-------	-------

Picture



<p>Technical description</p>	<ul style="list-style-type: none"> ■ Main frame pipe: flat elliptical (L120 * W60 * T3; L100 * W50 * T3) round pipe (φ 76 * 3).Appearance shaping: a new humanized design, which has been patented.Paint baking process: dust-free paint baking process for automobiles. ■ Seat cushion: excellent 3D polyurethane molding process, the surface is made of super fiber leather, waterproof and wear-resistant, and the color can be matched at will. ■ Handle: PP soft rubber material, more comfortable to grip. ■ Main points: 45 degree angle design, three sports positions, and automatic optimization of seat design to ensure that exercisers exercise correct posture and provide stable support. The pedal bracket supports the weight of the bull horn for easy loading of counterweight bolls. The super size pedals are supported by four linear bearings with high fixed load values, providing a stable, smooth and safe user experience. <p>Linear Leg perss 倒蹬机训练器</p> <p>Size: L-2405 W-1485 H-1505mm N.W: 260kgs</p> <p>Training parts: gluteus maximus, biceps femoris and quadriceps femoris</p>
------------------------------	--

Product name	Linear Hack Squat	model	PL-57
--------------	-------------------	-------	-------

Picture



<p>Technical description</p>	<ul style="list-style-type: none"> ■ Main frame pipe: flat elliptical (L120 * W60 * T3; L100 * W50 * T3) round pipe (φ 76 * 3).Appearance shaping: a new humanized design, which has been patented.Paint baking process: dust-free paint baking process for automobiles. ■ Seat cushion: excellent 3D polyurethane molding process, the surface is made of super fiber leather, waterproof and wear-resistant, and the color can be matched at will. ■ Handle: PP soft rubber material, more comfortable to grip. ■ The main points of the product: eliminate the load borne by the shoulders of the exercisers and avoid pressing the spine. The intuitive seat design ensures that the user is in a more natural and comfortable upright posture. The load is directly applied to the buttocks with better stability and more lower body muscles are involved in the exercise. The exerciser can easily enter and leave the apparatus, and the equipment also has large size plane antiskid pedals to help improve safety. At the same time, it provides a convenient location for heel training. <p>Linear Hack Squat 斜蹲机训练器</p> <p>Size: L-2180 W-1610 H-1500mm N.W: 202kgs</p> <p>Training parts: gluteus maximus, biceps femoris and quadriceps femoris</p>
------------------------------	---

Product name	ncline Lever Row	model	PL-61
--------------	------------------	-------	-------

Picture



<p>Technical description</p>	<ul style="list-style-type: none"> ■ Main frame pipe: flat elliptical (L120 * W60 * T3; L100 * W50 * T3) round pipe (φ 76 * 3).Appearance shaping: a new humanized design, which has been patented.Paint baking process: dust-free paint baking process for automobiles. ■ Seat cushion: excellent 3D polyurethane molding process, the surface is made of super fiber leather, waterproof and wear-resistant, and the color can be matched at will. ■ Handle: PP soft rubber material, more comfortable to grip. ■ Main points: the front chest cushion, the antiskid pedal and the large size roller pad can help maintain stability and provide support in the process of user training. The dual position handle enables users to target muscle groups and enhance the effect of movement. <p>Incline Lever Row 划船器</p> <p>Size: L-1820 W-1135 H-1185mm N.W: 90kgs</p> <p>Training position: triceps brachii, trapezius and deltoid</p>
------------------------------	---

Product name	Calf Raise	model	PL-62
--------------	------------	-------	-------

Picture



<p>Technical description</p>	<ul style="list-style-type: none"> ■ Main frame pipe: flat elliptical (L120 * W60 * T3; L100 * W50 * T3) round pipe (φ 76 * 3).Appearance shaping: a new humanized design, which has been patented.Paint baking process: dust-free paint baking process for automobiles. ■ Seat cushion: excellent 3D polyurethane molding process, the surface is made of super fiber leather, waterproof and wear-resistant, and the color can be matched at will. ■ Handle: PP soft rubber material, more comfortable to grip. ■ Product key points: angle setting of hanging piece angle is convenient for adding / removing counterweight. The thigh support pad can be adjusted to meet the specific needs of all users. Texture grain coated foot pedal provides users with durable and safe operation. <p>Calf Raise 坐式小腿训练器</p> <p>Size: L-1455 W-740 H-1045mm N.W: 74kgs</p> <p>Training site: gastrocnemius</p>
------------------------------	--

Product name	Squat	model	PL-65
--------------	-------	-------	-------

Picture



<p>Technical description</p>	<ul style="list-style-type: none"> ■ Main frame pipe: flat elliptical (L120 * W60 * T3; L100 * W50 * T3) round pipe (φ 76 * 3).Appearance shaping: a new humanized design, which has been patented.Paint baking process: dust-free paint baking process for automobiles. ■ Handle: PP soft rubber material, more comfortable to grip. ■ Product key points: special pivot system and intuitive and open squat training positioning can imitate muscle demand and barbell squat user stability as much as possible, and provide the control needed to master squat movement. <p>Squat 深蹲机</p> <p>Size: L-2330 W-1760 H-1570mm N.W: 234kgs</p> <p>Training parts: gluteus maximus, biceps femoris and quadriceps femoris</p>
-------------------------------------	---

Product name	Standing Press	model	PL-66
---------------------	-----------------------	--------------	--------------

Picture



<p>Technical description</p>	<ul style="list-style-type: none"> ■ Main frame pipe: flat elliptical (L120 * W60 * T3; L100 * W50 * T3) round pipe (φ 76 * 3).Appearance shaping: a new humanized design, which has been patented.Paint baking process: dust-free paint baking process for automobiles. ■ Handle: PP soft rubber material, more comfortable to grip. ■ Product key points: help in sports applications that require standing explosive power. The purpose of the standing equipment is to make the exerciser stand stably on the ground, while maximizing the power and explosive power of the feet. <p>Standing Press 站式推举训练器</p> <p>Size: L-2070 W-1550 H-2100mm N.W: 134kgs</p> <p>Training site: trapezius muscle , deltoid, triceps</p>
-------------------------------------	---

Product name	Standing Incline Press	model	PL-67
--------------	------------------------	-------	-------

Picture



<p>Technical description</p>	<ul style="list-style-type: none"> ■ Main frame pipe: flat elliptical (L120 * W60 * T3; L100 * W50 * T3) round pipe (φ 76 * 3).Appearance shaping: a new humanized design, which has been patented.Paint baking process: dust-free paint baking process for automobiles. ■ Handle: PP soft rubber material, more comfortable to grip. ■ Product point: loading in opposite position, able to twist on the upper slope. In addition, the handle provides the user with stability during one arm training. Standing equipment is designed to allow the exerciser to stand steadily on the ground while maximizing the strength and explosive power of the feet. <p>Standing Incline Press 站式上推拉综合训练器</p> <p>Size: L-2045 W-1960 H-1925mm N.W: 131kgs</p> <p>Training site: trapezius muscle , deltoid, triceps</p>
------------------------------	---

Product name	Standing Decline Press	model	PL-68
---------------------	-------------------------------	--------------	--------------

Picture



<p>Technical description</p>	<ul style="list-style-type: none"> ■ Main frame pipe: flat elliptical (L120 * W60 * T3; L100 * W50 * T3) round pipe (φ 76 * 3).Appearance shaping: a new humanized design, which has been patented.Paint baking process: dust-free paint baking process for automobiles. ■ Handle: PP soft rubber material, more comfortable to grip. ■ Product key point: loading in the opposite position can carry out torsion movement on the lower slope. <p>In addition, the handle provides the user with stability during one arm training. The purpose of the standing equipment is to make the exerciser stand stably on the ground, while maximizing the power and explosive power of the feet.</p> <p>Standing Decline Press 站式下推拉综合训练器 Size: L-1860 W-1463 H-2550mm N.W: 145kgs Training site: trapezius muscle, deltoid, triceps</p>
-------------------------------------	--

Product name	Squat Lunge	model	PL-69
--------------	-------------	-------	-------

Picture



<p>Technical description</p>	<ul style="list-style-type: none"> ■ Main frame pipe: flat elliptical (L120 * W60 * T3; L100 * W50 * T3) round pipe (φ 76 * 3).Appearance shaping: a new humanized design, which has been patented.Paint baking process: dust-free paint baking process for automobiles. ■ Handle: PP soft rubber material, more comfortable to grip. ■ Product key points: various strength curves are provided by using different load points and handle positions. The purpose of the standing equipment is to make the exerciser stand stably on the ground, while maximizing the power and explosive power of the feet. <p>Squat Lunge 硬拉架</p> <p>Size: L-1533 W-1625 H-785mm N.W: 100kgs</p> <p>Training site: trapezius muscle Deltoid, triceps brachii, gastrocnemius</p>
-------------------------------------	--

Product name	Hip Lift	model	PL-73
--------------	----------	-------	-------

Picture



<p>Technical description</p>	<ul style="list-style-type: none"> ■ Main frame pipe: flat elliptical (L120 * W60 * T3; L100 * W50 * T3) round pipe (φ 76 * 3).Appearance shaping: a new humanized design, which has been patented.Paint baking process: dust-free paint baking process for automobiles. ■ Seat cushion: excellent 3D polyurethane molding process, the surface is made of super fiber leather, waterproof and wear-resistant, and the color can be matched at will. ■ Handle: PP soft rubber material, more comfortable to grip. ■ Product point: enhance hip strength through hip movement. The comfortable waistband ensures the safety of the back, and the device is designed to promote good biomechanics of human balance. <p>Hip Lift 臀部上举训练器</p> <p>Size: L-1668 W-1524 H-790mm N.W: 89kgs</p> <p>Training position: gluteus maximus</p>
------------------------------	---

Product name	Hip Belt Squat Machine	model	PL-74
--------------	------------------------	-------	-------

Picture



<p>Technical description</p>	<ul style="list-style-type: none"> ■ Main frame pipe: flat elliptical (L120 * W60 * T3; L100 * W50 * T3) round pipe (φ 76 * 3).Appearance shaping: a new humanized design, which has been patented.Paint baking process: dust-free paint baking process for automobiles. ■ Product key points: special pivot system and intuitive and open squat training positioning can imitate muscle demand and barbell squat user stability as much as possible, and provide the control needed to master squat movement. <p>Hip Belt Squat Machine 臀部腰带式深蹲机</p> <p>Size: L-1812 W-1380 H-1103mm N.W: 158kgs</p> <p>Training parts: gluteus maximus, biceps femoris and quadriceps femoris</p>
------------------------------	---

Product name	Incline Chest Clip	model	PL-75
--------------	--------------------	-------	-------

Picture



<p>Technical description</p>	<ul style="list-style-type: none"> ■ Main frame pipe: flat elliptical (L120 * W60 * T3; L100 * W50 * T3) round pipe (φ 76 * 3).Appearance shaping: a new humanized design, which has been patented.Paint baking process: dust-free paint baking process for automobiles. ■ Seat cushion: excellent 3D polyurethane molding process, the surface is made of super fiber leather, waterproof and wear-resistant, and the color can be matched at will. ■ Handle: PP soft rubber material, more comfortable to grip. ■ Key points of the product: exercise and depict the depth of the middle groove of the pectoralis major to make the pectoralis major look fuller. <p>Incline Chest Clip 上斜夹胸</p> <p>Size: L-1559 W-1119 H-1088mm N.W: 102kgs</p> <p>Training position: pectoralis major, deltoid and triceps brachii, biceps brachii</p>
------------------------------	--